

How to install eStream on your office PC

To be able to use eStream on your office PC there are some technical considerations you need to be aware of:

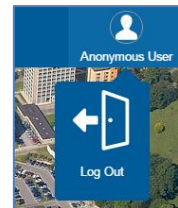
- The application only runs on Windows
- You will need at least a microphone connected to your PC to enable audio capture
- The PC must meet the minimum specification:
 - Dual-core processor (a reasonably fast PC)
 - 4GB RAM (reasonable amount of RAM)
 - Intel HD Graphics (decent graphics card)

Also in order to install the eStream application on your office PC you need to be able to answer yes to **both** of the following:

- Have attended an eStream training session
- Have Administrator rights on the PC you wish to install eStream (this can be arranged for a limited time through IT Support)

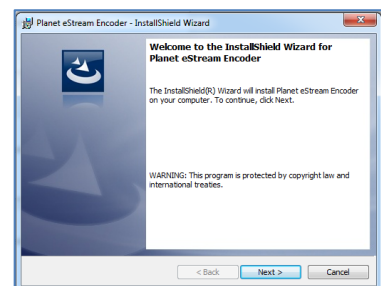
Installation

1. Navigate to <https://videostream.swan.ac.uk>
2. Hover over the **Anonymous User** icon and click **Log Out**
3. Log in using your **University** credentials
4. Click **Tools** in the menu bar then select **Install Encoder**



5. The encoder file will be downloaded. Once downloaded double click on the file to start the installation

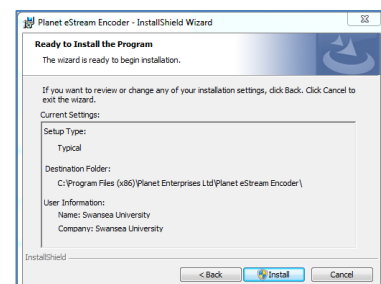
6. Click **Next** when the dialog box appears



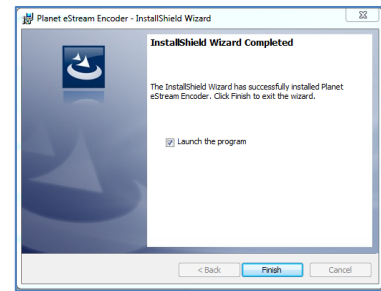
7. **Accept** the terms in the licence agreement and click **Next**

8. On the next screen click **Install**

9. When presented with a **User account control credentials** dialog box use your **University username** and **password** to allow installation

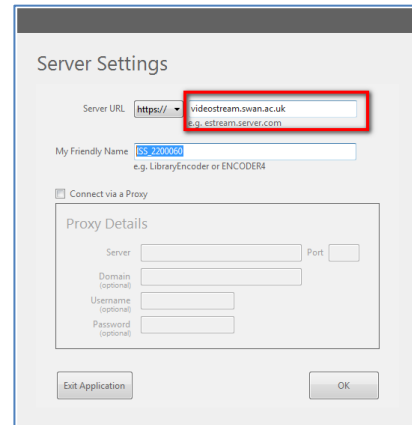


10. When presented with the **Completed** dialog box click **Finish**



11. When eStream launches you will need to input the Server URL: **videostream.swan.ac.uk**

12. Click **OK**



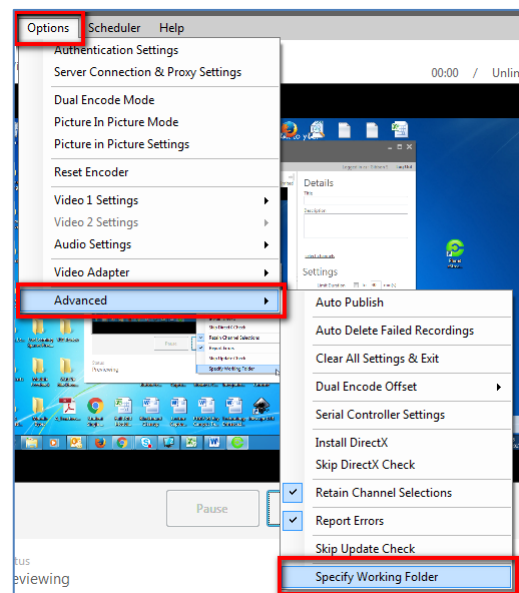
13. On the next screen log in using your **University** credentials

14. You now need to configure your **Video** and **Audio** settings. Click on the **Video** icon to select the video source (screen capture or video camera) and the **Audio** icon to select a microphone

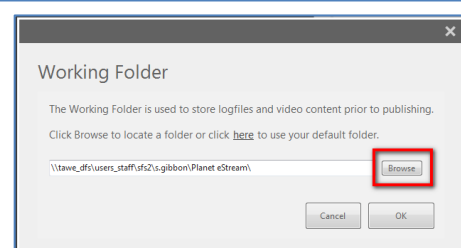


15. Finally you need to ensure the Working folder is set to a local drive (on the PC) and not a network drive.

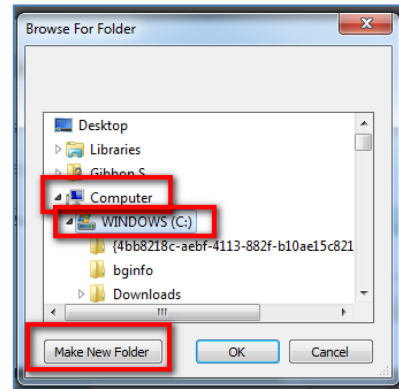
Click **Options > Advanced > Specify Working Folder**



16. Click **Browse**

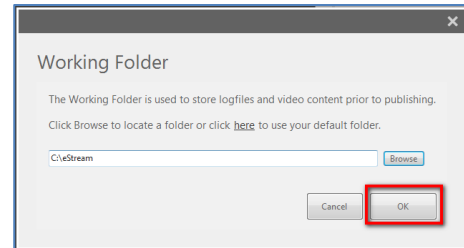


17. Click **Computer > Windows (C:)**, then click **Make New Folder**



18. Rename it **eStream**, then Click **OK**

19. Finally click **OK**



20. You are now all set up, whenever you wish to use **eStream** on the PC just click the **eStream** icon which should be located on the Desktop

